

**LPR: AA123AA**  
Country: France  
Speed: 124 km/h | 77 mph  
Direction: Front

**AA-123-AA**

**LPR: 5A0J230**  
Country: US-CA  
Speed: 112 km/h | 70 mph  
Direction: Rear

**5A0J230**

**LPR: 1CDE013**  
Country: Belgium  
Speed: 96 km/h | 50 mph  
Direction: Rear

**1-CDE-013**

**LPR: 2345ABC**  
Country: Spain  
Speed: 103 km/h | 64 mph  
Direction: Rear

**2345 ABC**

**survision**  
ADVANCED TRAFFIC SENSORS

The LPR EXPERT  
for your projects



55%  
of expenditure  
on R&D



15+ years  
of LPR design  
expertise



20 000+  
sensors provided



300+ integrator  
clients

# Segments & Benefits



## ACCESS CONTROL

- Automatic access for subscribers
- Lost ticket
- Transparent invoicing
- Pollution reduction
- Improved security
- Reduction of operational costs



## LOCAL AUTHORITIES

- Management of reserved lanes (bus, taxi)
- On-street parking management
- Identification of wanted vehicles (stolen vehicles)
- Management of traffic restrictions (heavy trucks, ...)



## SECURITY FORCES

- Identification of wanted vehicles (stolen vehicles)
- Identification of uninsured vehicles
- Identification of vehicles lacking roadworthiness inspection



## ROAD TRAFFIC

- Measurement and study of traffic
- Reduction of operational costs
- Journey time
- Dangerous Goods monitoring
- Stop & Go and Free-Flow tolling

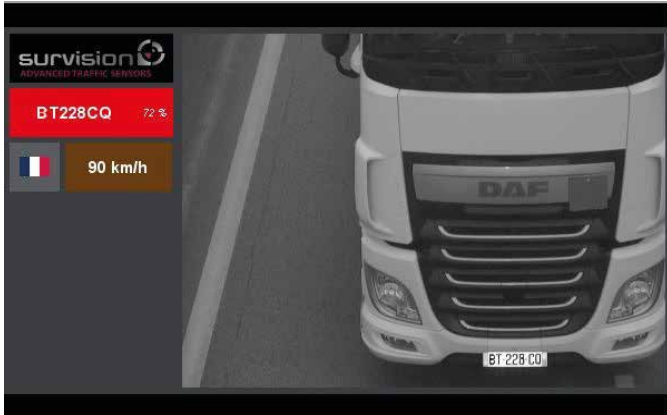


# Technology

XYZ 000

## LPR

- Real-time video processing
- No external trigger device required
- Extraction of license plate content
- Functions with all license plate types
- Other available data: hour, country, direction of travel...



## Instantaneous speed

- Detect a path and a speed according to the identified plate location
- Available for already-installed LPR sensors
- Multiplication of control points at reduced cost
- No additional server required
- Proportion of vehicles monitored superior to other technologies



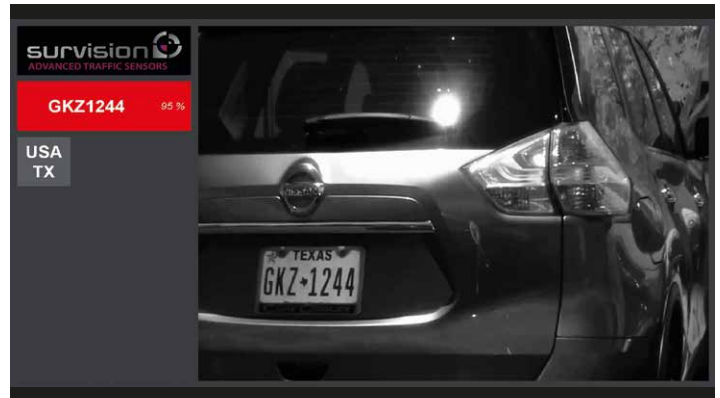
## Dangerous goods

- Monitoring and tracking transportation of Dangerous Goods (DG) access to tunnels and cities
- Improve awareness and avoid the confinement and proximity of toxic products of high-risk sites
- Enforce traffic restrictions for certain locations (tunnels, urban centres, bridges, high-risk sites ...)



## Plate Fingerprint

- Calculation of the Plate Fingerprint using the technology of points of interest focused on the license plate
- Designed for motorway and car-park management companies in order to:
  - Increase the matching rate with LPR (>99.5% in test situations)
  - Reinforce car-park security



# Products

## NANOPAK

## MICROPAK

## VISIPAK (OV)

### Common features:

All-integrated = no server  
 All-integrated = low network impact  
 Adjustable zoom and filming area  
 No external trigger required

Integrated illumination & bracketing  
 Variable wavelengths  
 Confidence rate  
 Remote adjustment

No OS, DSP platform  
 Very high speed  
 Real-time video stream  
 Common CDK



High definition (HD)  
 Ultra-compact 450 gr | 1 lbs  
 67x78x116 mm | 2.99x3.07x4.57'  
 2 - 8m | 6 - 26 ft  
 24V  
 Aluminum  
 60 fps  
 -20° / +55° C | -4°/+131°F (external temp.)  
 Lane width 4m | 13 ft

**Access control**  
**Stop & Go tolling**



High Definition (HD)  
 Ultra-compact 1050 gr | 2.3 lbs  
 130x115x70 mm | 5.12x4.53x2.76'  
 2 options: 3.5-8m, 4.5-10.5m | 10-23, 13-33 ft  
 24V  
 Aluminum - IP67  
 60 fps  
 -40° / +55° C | -40°/+131°F (external temp.)  
 Lane width 4m | 13 ft  
 250 Km/h | 155 mph

**Access control**  
**Channeled tolling**  
**Public safety**



High definition (HD)  
 226x148x141 mm | 8.90x5.83x5.55'  
 2 - 40m | 6.56-131.23 ft  
 24V  
 Aluminium - IP67  
 Context image (-OV)  
 60 fps  
 -20° / +55° C | -4°/+131°F (external temp.)  
 Lane width 7m | 23 ft  
 250 Km/h | 155 mph

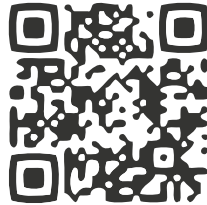
**Free-Flow tolling**  
**Public safety**  
**Road traffic**



# They use our technology



To design and provide integrators  
with the best video vehicle  
identification sensors



[www.survision.eu](http://www.survision.eu)

**SURVISION**

31 boulevard des Bouvets  
92000 NANTERRE  
FRANCE  
+33 (01) 47 51 04 80  
[contact@survision.fr](mailto:contact@survision.fr)

[www.survisiongroup.com](http://www.survisiongroup.com)

**SURVISION**

11251 NW 20th St #116  
Miami, FL 33172  
USA  
Tel. +1 (786) 362.5471  
[contact@survisiongroup.com](mailto:contact@survisiongroup.com)